

G2 Recognizes Jama Connect® as the Leader in Requirements Management

[SCHEDULE A DEMO](#)



Grid® Report for Requirements Management | Spring 2024



Grid® Report for Requirements Management | Spring 2024 is based off of scores calculated using the G2 Grid® algorithms from reviews collected by March 05, 2024.

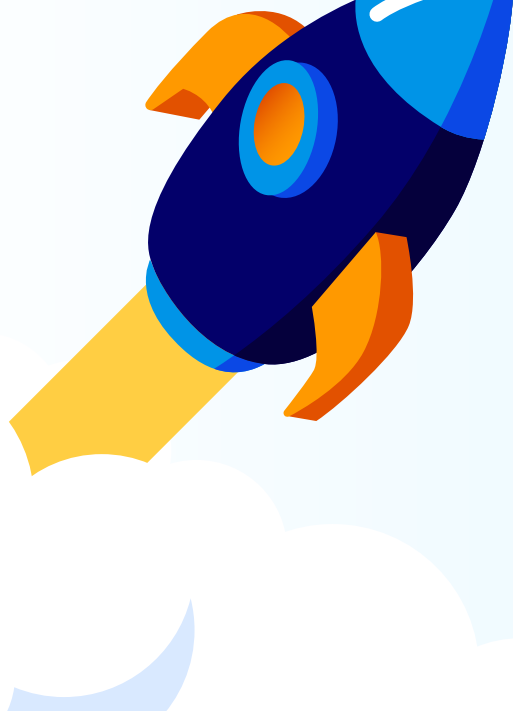
“

Simple to use. All engineers were able to pick up and use the tools with very little learning curve. **To everyone of the team, this tool was a breath of fresh air.**

— G2 reviewer ★★★★★



**Achieve ROI
48% times faster**
than IBM® DOORS Next®



**Go live with
Jama Connect®
2.3x faster**
than IBM® DOORS Next®

“

Jama Connect allows my team and I the ability to collaborate in our product design and development. It has a nice user interface that is intuitive and quick for new employees to learn. I also like the API which allows us to sync it with our existing project management tools.

— G2 reviewer ★★★★★



“

Upsides:

- **Very easy to use** with minimal training
- The entire system is **very web 2.0/UX friendly**
- **Excellent traceability** and view management
- Administration of the system is **very easy and intuitive**

— G2 reviewer ★★★★★



Ease of Admin

Jama Connect® **84%**

IBM® DOORS Next® **72%**

Ease of Doing Business

Jama Connect® **88%**

IBM® DOORS Next® **76%**

“

Jama Connect has a modern intuitive interface. Most employees and contractors have no trouble spooling up in order to use it. More importantly, the back end of Jama Connect is well thought out and easily configurable for a wide range of user needs. Jama is flexible to be used in many ways by many groups for many types of workflows.

— G2 reviewer ★★★★★



“

Ease of use and low barrier to entry. Once configured, the tool is usable within a few hours for all staff, even without Systems Engineering experience. Most importantly, it doesn't slow down or get in the way of the engineering.

— G2 reviewer ★★★★★



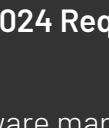
Grid Score Breakdown



	Satisfaction Score	G2 Score
Jama Connect®	87	89
IBM® DOORS Next®	25	55

[SCHEDULE A DEMO](#)

Powered by



Data was sourced from the Spring 2024 Requirements Management Grid® Report

G2 is the world's largest and most trusted software marketplace. More than 90 million people annually – including employees at all Fortune 500 companies – use G2 to make smarter software decisions based on authentic peer reviews. Thousands of software and services companies of all sizes partner with G2 to build their reputation and grow their business – including Salesforce, HubSpot, Zoom, and Adobe. To learn more about where you go for software, visit www.g2.com and follow us on [LinkedIn](https://www.linkedin.com/company/g2/).